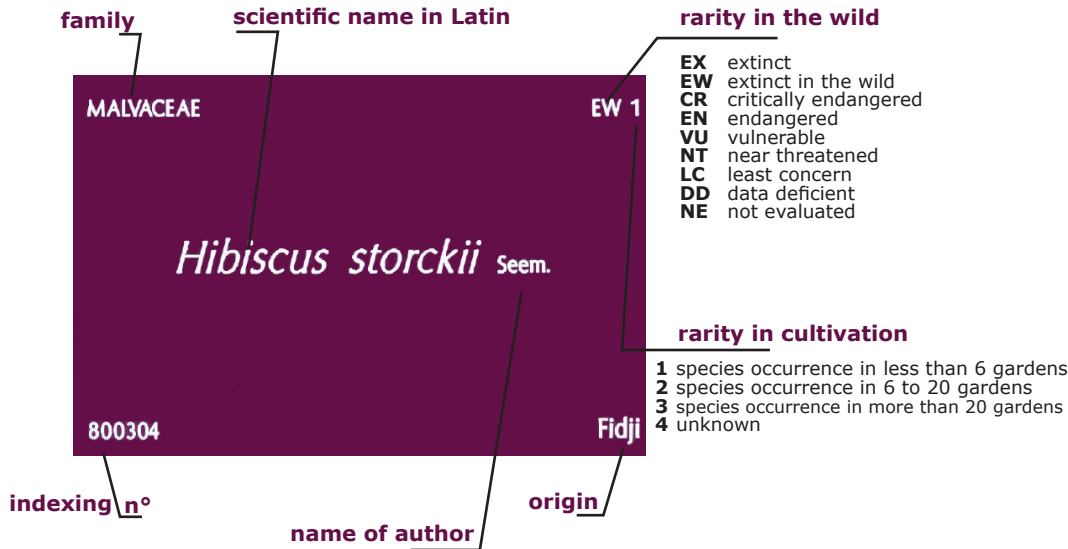


How to read a label ?

As all species do not necessarily have a French or English common name, we decided to only display **scientific names in Latin** on our labels.

The latter provide a code related to the **species' overall rarity** in the wild and in cultivation: **the letters** refer to the international classification defined by the International Union for Conservation of Nature - IUCN, and **the numbers** specify the plant's occurrence in botanical garden collections on a global scale - a criterion established by the Conservatoire Botanique.



Biological control



Plants grown in the greenhouses are subjected to insect pest attacks on a regular basis. To fight against this, we first of all prioritize **biological control**. The small bottles, strips of paper, cardboard boxes or bags hooked onto the plants are used to disseminate those **predatory insects**. Please do not touch them!

Friends & Visitors

- Collecting and harvesting are strictly prohibited.
- Please stay on the paths and watch your children.
- Do not climb rocks; do not climb over wooden fences.
- Pets are not allowed inside the greenhouses.

Thank you for your visit. Please do not hesitate to share your comments by answering the feedback form provided at the greenhouse exit, on our Facebook or Tripadvisor page. And don't forget to drop by the shop for postcards, a discovery guide to the greenhouses...

WELCOME

TO

The tropical greenhouses



Rare

and preserved treasures



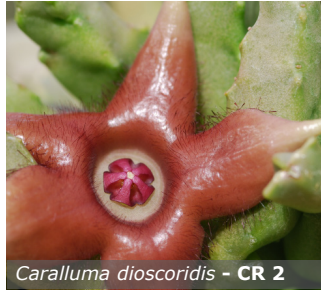
Production and photos © CBN de Brest - Drawings © A. Duval Guennoc (anna.duvalguennoc@gmail.com) - Translation © Loon - Anne Lindsey (www.loon.alindsey.net)



Cylindrocline lorencei - EW 1



Normania triphylla - EW 2



Caralluma dioscoridis - CR 2

Serving the preservation of wild flora

Today, approximately **20% of the world's plant species** are directly threatened with extinction due to human activity. While able to destroy, we are also able to find the willpower to preserve this biological heritage in order to pass it on to future generations.

The **Conservatoire Botanique National de Brest**, as a scientific and technical establishment, thus commits every day to studying and preserving wild plants and natural environments in western France and global biodiversity hotspots: Brittany, Pays de la Loire as well as Sicily, Madagascar, Chile...

While visiting the exhibition at the **Reception Building** and the **tropical greenhouses**, you will discover the diversity of its actions.

The collection of threatened plants

The Conservatoire's priority work is the **on-site preservation of natural environments and the plants** these comprise. However, for lack of better means, «out of nature» or ex situ conservation measures sometimes need to be taken. This is the aim of a plant collection.

Derived mainly from the team's activities abroad, it includes species on the brink of extinction, for which it is essential to ensure rescue through **ex situ conservation** in greenhouses, seed banks (seeds stored and frozen at -18°C) or a conservatory garden.

With **1,800 species**, this collection of threatened wild plants is among the three most important in the world. It contributes to preserving such species in the long term and to disseminating them in other botanical gardens and conservatories. **Reintroduction** programs are thereafter developed for them to return to their restored natural environment.

The tropical greenhouses



Through the story of several plants, whether beautiful or simple, we suggest that you discover the purpose of preserving endangered species and comprehend the role of the Conservatoire Botanique in protecting wild plants. The tropical greenhouses, covering an area of 1,000m², represent 4 tropical climates. The rare plants mainly originate from Madeira, the Canary Islands, the West Indies, the Juan Fernandez Islands, Mauritius or the Hawaiian Islands.

Upon exiting you will find a small collection of carnivorous plants and, outdoors, you can contemplate rare plants indigenous to the Armorican Massif and Europe, as well as ornamental species from Asia, Australia or the Americas.

With about 500 threatened plant species, the greenhouses hold one of the world's highest concentration of endangered plants!

